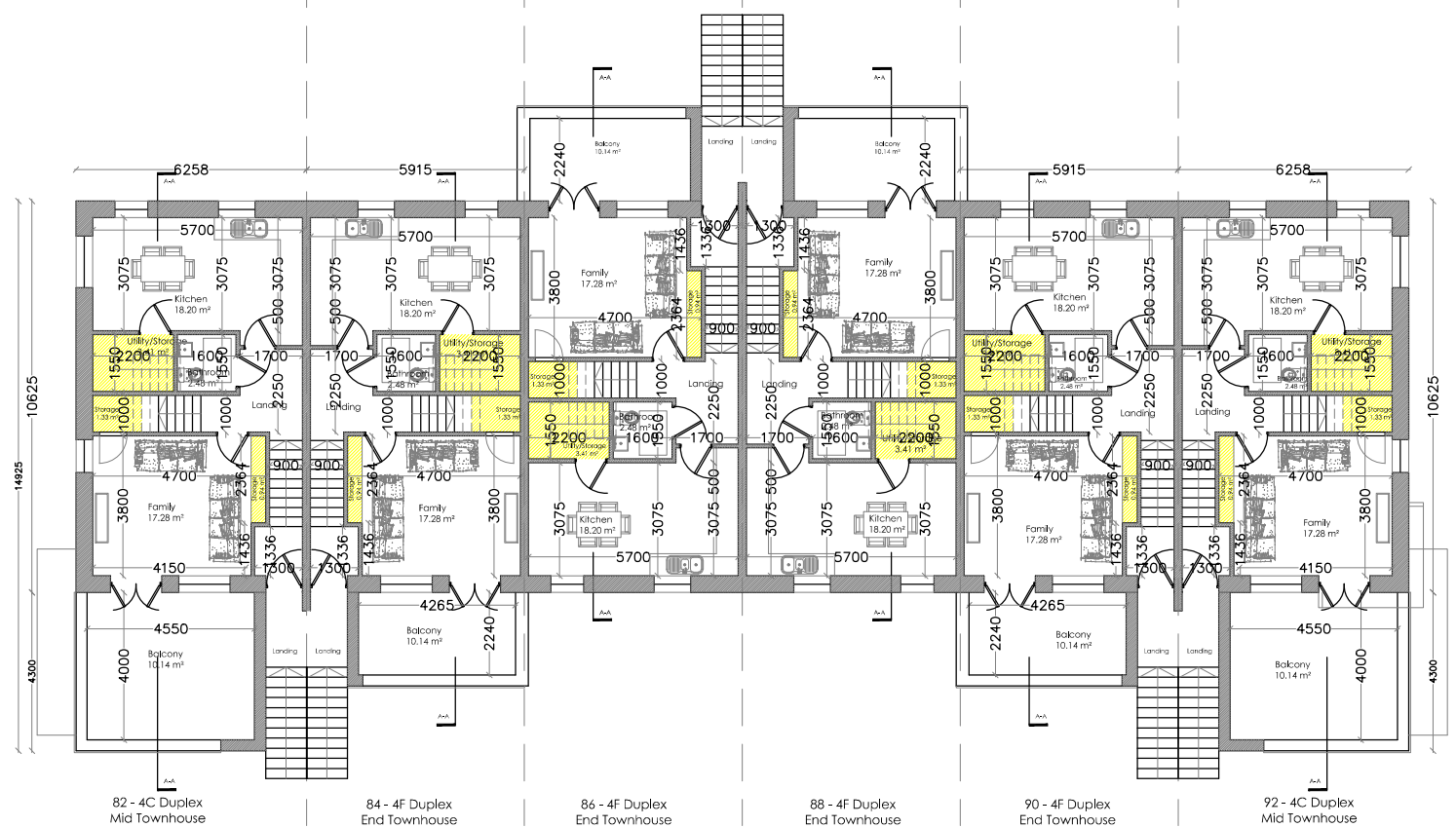


**Ground Floor Plan**  
SCALE 1:200 @ A3



**First Floor Plan**  
SCALE 1:200 @ A3

SPACE PROVISION: Design Standards for New Apartments March 2018

HOUSE TYPE 04D		DWELLING TYPE: 2 BED / 4 PERSON APT		
	TARGET GROSS FLOOR AREA (m <sup>2</sup> )	AGGREGATE LIVING AREA (m <sup>2</sup> )	AGGREGATE BEDROOM AREA (m <sup>2</sup> )	STORAGE (m <sup>2</sup> )
GUIDELINE	73	30	24.4	6
ACHIEVED	<b>75.03</b>	<b>30.05</b>	<b>25.14</b>	<b>6.56</b>

ROOM STANDARDS: Design Standards for New Apartments March 2018

BEDROOM TYPE	GUIDELINE (m <sup>2</sup> )	MAIN BEDROOM 01	BEDROOM 02	BEDROOM 03
SINGLE BEDROOM	7.1	-	-	-
DOUBLE BEDROOM	11.4	-	<b>11.62</b>	-
MAIN BEDROOM	13	<b>13.52</b>	-	-

LIVING ROOM WIDTHS : Design Standards for New Apartments March 2018

HOUSE TYPE	GUIDELINE (m <sup>2</sup> )	STANDARD ACHIEVED	Private Amenity Space (m <sup>2</sup> )
1 BED APARTMENT	3.3	-	GUIDELINE 5m <sup>2</sup>
2 BED APARTMENT	3.6	<b>3.7</b>	GUIDELINE 7m <sup>2</sup> <b>10.36</b>
3 BEDROOM APARTMENT	3.8	-	GUIDELINE 9m <sup>2</sup>

BEDROOM WIDTHS: Design Standards for New Apartments March 2018

BEDROOM TYPE	GUIDELINE (m <sup>2</sup> )	MAIN BEDROOM 01	BEDROOM 02	BEDROOM 02
SINGLE BEDROOM	2.1	-	-	-
DOUBLE BEDROOM	2.8	<b>2.8</b>	<b>2.8</b>	-

SPACE PROVISION: Design Standards for New Apartments March 2018

HOUSE TYPE 04C/F		DWELLING TYPE: 3 BED / 5 PERSON 2 STOREY		
	TARGET GROSS FLOOR AREA (m <sup>2</sup> )	AGGREGATE LIVING AREA (m <sup>2</sup> )	AGGREGATE BEDROOM AREA (m <sup>2</sup> )	STORAGE (m <sup>2</sup> )
GUIDELINE	90	34	31.5	9
ACHIEVED	<b>110.86</b>	<b>34.54</b>	<b>34.28</b>	<b>10.20</b>

ROOM STANDARDS: Design Standards for New Apartments March 2018

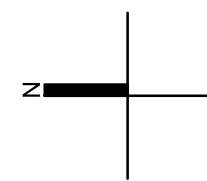
BEDROOM TYPE	DOEHLG GUIDELINE (m <sup>2</sup> )	MAIN BEDROOM 01	BEDROOM 02	BEDROOM 03	BEDROOM 04
SINGLE BEDROOM	7.1	-	-	<b>7.78</b>	-
DOUBLE BEDROOM	11.4	-	<b>12.73</b>	-	-
MAIN BEDROOM	13	<b>13.77</b>	-	-	-

LIVING ROOM WIDTHS : Design Standards for New Apartments March 2018

HOUSE TYPE	DOEHLG GUIDELINE (m)	STANDARD ACHIEVED
1 BED APT/HOUSE	3.3	-
2 BEDROOM HOUSE	3.6	-
3 BEDROOM HOUSE OR MORE	3.8	<b>3.8</b>

BEDROOM WIDTHS: Design Standards for New Apartments March 2018

BEDROOM TYPE	DOEHLG GUIDELINE (m)	MAIN BEDROOM 01	BEDROOM 02	BEDROOM 03	BEDROOM 04
SINGLE BEDROOM	2.1	-	-	<b>2.25</b>	-
DOUBLE BEDROOM	2.8	<b>3.8</b>	<b>3.35</b>	-	-



Revision	Description	Date

THIS DRAWING IS THE EXCLUSIVE PROPERTY OF HORGAN CARROLL ARCHITECTS AND THE REPRODUCTION OF ANY PART WITHOUT PRIOR WRITTEN CONSENT FROM THIS OFFICE IS A VIOLATION OF APPLICABLE LAWS. CONTRACTOR TO CHECK AND VERIFY ALL LEVELS, DATUMS AND DIMENSIONS ON SITE AND SHALL REPORT ANY DISCREPANCIES OR OMISSIONS TO THIS OFFICE PRIOR TO START OF WORK & DURING THE CONSTRUCTION PHASE. DO NOT SCALE. FIGURED DIMENSIONS ONLY TO BE TAKEN FROM THIS DRAWING.

**Status: PLANNING**  
 Project: MULTI UNIT RESIDENTIAL DEVELOPMENT  
 Client: LONGVIEW ESTATES LIMITED  
 Address: LAHARDANE, BALLYVOLANE, CO. CORK  
 Date: 08.11.19 Scale: 1:200  
 Drawn By: JM Checked By: MC Approved By: PH

Drawing Number: **17-002-P-761**

021 4630110 • info@horgancarroll.ie • www.horgancarroll.ie  
 3 Water's Edge, Riverside way, Middleton, Co. Cork, P25 A033

Drawing Title: **12 UNIT DUPLEX - SOUTH - N5 - 81-92 GROUND & FIRST FLOOR PLAN**